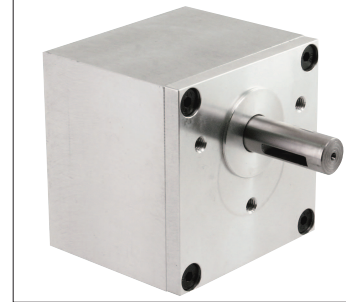


Spur gear

Properties:	General:	Multi-stage, closed spur gear For use in combination with our motors. Single gear with ball-bearing ingoing shaft (2 bearings back-to-back) Lifetime grease lubrication
	Housing:	Machined from massive aluminum User-defined installation Mounting possibility from all accessible sides
	Tooth system tech.:	Individually guided gear-pinion combinations Ingoing stage with oblique teeth Ball bearing end shaft
	Options:	Planet gears



Loading capacity	Max. radial force	N	300
	Max. axial force	N	40
	Max. input speed	rpm	5000
	Temperature range	°C	-20° – +40°
Mounting	Shaft diameter	mm	12
	Weight	kg	0.66 (2-stage) – 0.78 (4-stage) front side
	Mounting part (standard)		

Translations	i	Stages	M (Nm)	η	i	Stages	M (Nm)	η	i	Stages	M (Nm)	η
	4.8	2	2.5	0.9	42	3	6.5	0.85	136	4	7	0.81
	10.4	2	5.5	0.9	49	3	6.5	0.85	155	4	7	0.81
	15.4	2	5.5	0.9	64.8	4	7	0.81	181	4	7	0.81
	20.5	2	5.5	0.9	86.1	4	7	0.81	210	4	7	0.81
	24.7	3	6.5	0.85	100	4	7	0.81	279	4	7	0.81
	31.6	3	6.5	0.85	117	4	7	0.81				

Dimensions

