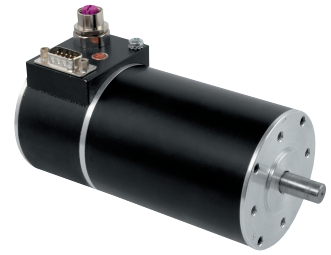
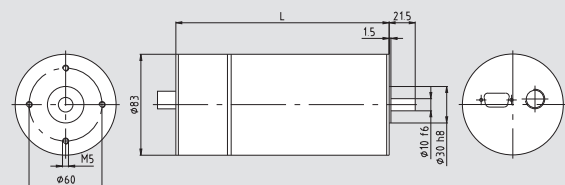


Brushless Positioning drive

Features:	CANopen
	Profibus-DP
	Integrated 4 Q controller
	Sinus commutation
	Absolute multi-turn encoder, Run records programmable
	Rotor: 4-pole neodym magnet, low cogging
	Life time: 20,000 h, S1 duty
	Isolation class: B, optional F
	Protection class: IP 44, optional up to IP 65
	Ambient temperature: -15°C ... 40°C
	Protection: Overtemperature protection, current limitation



Type	Nominal voltage	U	V _{DC}	MSA 863			
				24			
Technical data	Power output	P ₂	W	144			
	Nominal speed	n _{nom}	rpm	3600			
	Nominal torque	M _{nom}	cNm	38			
	Starting torque	T _S	Ncm	100			
	Nominal current	I	A	7.8			
	Nominal power input	P ₁	W	187			
	Positioning resolution			0.02°			
	Positioning accuracy			+/-1°			
Characteristics	Gradient torque-speed	1 / K	mNm / rpm	1.24			
	Max. torque	M	cNm	74			
	Nominal efficiency	η		0.75			
Dynamics	Weight	m	kg	3.1			
	Moment of inertia	J	gcm ²	1330			
Thermal cond.	Ambient temperature	T _u	°C	-20 to +40			
	Max. stator temperature	T _{max}	°C	+120			
Mechanical data	Shaft diameter	d	mm	10			
	Max. axial force	F _a	N	40			
	Max. radial force	F _r	N	400			
Communication	Fieldbus	CANopen v. 2.0B		Profibus			
	Profile	DS-301 v. 4.02		Profibus Nr. 3 version 2.0			
	Max. baud rate	DSP-305 v. 1.0		12 Mbit/s			
	Connector	1 Mbit/s		see chapter connector			
Dimension		Type	L / mm				
		MSA 863	168				



Recommended gear - combinations

other gears and extensions upon request	Worm gear	S 769		
	Spur gear	Z 8	M 7	M 10
	Planetary gear	PM 80		